



Lighting regulation depending on occupancy and daylight for high-bay warehouses

Special occupancy detectors and mult-sensors for mounting at high levels

The tried and tested PD4-M-GH family with an enormous motion detection area of up to 44m diameter (at a mounting height of up to 16m!) is now extended with new DALI variants. As well as a DALI compact variant, which is able to control whole light bands directly via Broadcast, there is also now a PD4-GH variant for DALISYS and DALI-2-BMS. The DALI-2-BMS variant is optimised for third party lighting control systems.

The high point: the new DALI variants of the GH family now offer an external light sensor with telescope function, which enables constant light regulation up to a 16m mounting height. The light sensor's detection area can be adjusted simply by pulling out the telescopic part of the light sensor to the relevant mounting height.

The motion detection is optimised for high-bay warehouses and mounting heights larger than 10m. Through better integration of daylight and a dimming option, these new detectors can save even more energy in many applications. Of course all DALI occupancy detectors have the orientation light function. Thanks to this function, it is possible to illuminate corridors, for example, with a dim light such as 10% of the total light output for improving the safety of people present. DALISYS and "Guided Light" offer a thinking ahead following light.

When used in high-bay warehouses, care should be taken that, in the cross-aisles of the warehouse, detectors are installed that can detect movement only in the desired aisle locations, by using blinds or other technical arrangements.

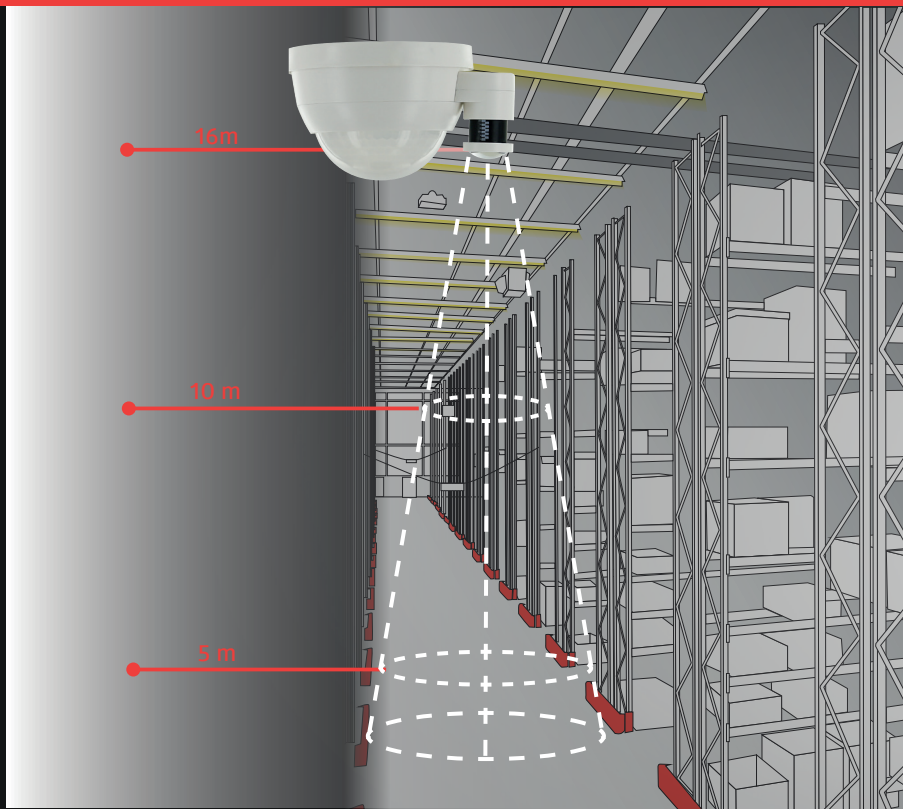


The new telescope light sensor



The telescopic part of the light sensor is pulled out according to the mounting height. This enables a daylight-dependant regulation to a mounting height of up to 16m.

Application example high-bay warehouse



PD4-M-DALI/DSI-GH-SM



- DALI occupancy detector for surface mounting in large mounting heights
- External telescopic light sensor for a mounting height between 5 and 16 m (mechanically adjustable) for measuring the light according to the application
- DALI/DSI interface for the control of digital dimmable ballasts as a group
- Permanent or time-limited orientation light
- Extension of the detection area possible with slave devices

PD4-M-DALI/DSI-GH-SM, Part no. 93015

Technical Data

- Voltage: 110 - 240 V AC 50 / 60 Hz
- Power consumption: 0,9W
- Detection area: 360°
- Range: max. Ø 44 m transversal
max. Ø 30 m towards
- Degree / class of protection: IP54 / II
- DALI output: up to 50 DALI / DSI-EB
- Follow-up time: 1 min. - 30 min
- Brightness set value: 10 - 2500 Lux
- Orientation light: 5% - 100% /
1 min - 120 min / ∞
- Light measurement: mixed light

PD4-DALISYS-GH-SM

- Addressable DALI multi-sensor for surface mounting in large mounting heights
- External telescopic light sensor for a mounting height between 5 and 16 m (mechanically adjustable) for measuring the light according to the application
- Seamless integration into the scalable B.E.G. LUXOMAT®net DALISYS
- Individual and powerful localisation LED for a quick and secure commissioning
- Guided Light, Soft-Start PLUS, orientation light PLUS
- The complete scope of functions is only activatable using accessory from the B.E.G. LUXOMAT®net DALISYS product range

Technical Data

- Voltage: Typ. 16 V DC (DALI)
- Power consumption: 7 mA
- Detection area: 360°
- Range: max. Ø 44 m transversal
max. Ø 30 m towards
- Degree / class of protection: IP54 / II
- Follow-up time: 1 s - 120 min
- Orientation light: 5 % - 100 % /
1 min - 120 min / ∞
- Brightness set value: 10 - 2500 Lux



PD4-DALISYS-GH-SM, Part no. 93345

PD4-DALI-2-BMS-GH-SM



- Addressable DALI multi-sensor for surface mounting in large mounting heights
- External telescopic light sensor for a mounting height between 5 and 16 m (mechanically adjustable) for measuring the light according to the application
- Individual and powerful localisation LED for a quick and secure commissioning
- Addressable and operable conforming to IEC 62386 Part 103 (control device)
- Level 0 provides information concerning room occupancy and motion detection according to IEC 62386 Part 303 on the DALI bus
- Level 1 provides LUX values according to IEC 62386 Part 304 on the DALI bus

Technical Data

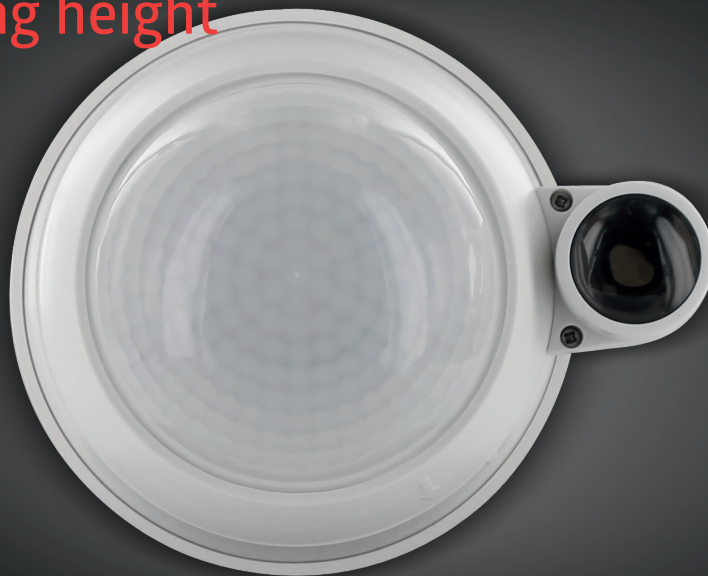
- Voltage: Typ. 16 V DC (DALI)
- Power consumption: 7 mA
- Detection area: 360°
- Range: max. Ø 44 m transversal
max. Ø 30 m towards
- Degree / class of protection: IP54 / II
- Brightness set value: 10 - 2500 Lux

PD4-DALI-2-BMS-GH-SM, Part no. 93025

Excellence!

Light regulation up to 16m mounting height

“



B.E.G. UK Ltd

Apex Court – Grove House, Camphill Road T 0 870 850 5412 info@beguk.co.uk
West Byfleet, Surrey KT14 6SQ F 0 870 850 5413 beg-luxomat.com

Headquarter Germany (MENA-Region)

B.E.G. Brück Electronic GmbH

Gerberstraße 33 T +49 (0)2266-90121-0
51789 Lindlar F +49 (0)2266-90121-50

info@beg.de
beg-luxomat.com