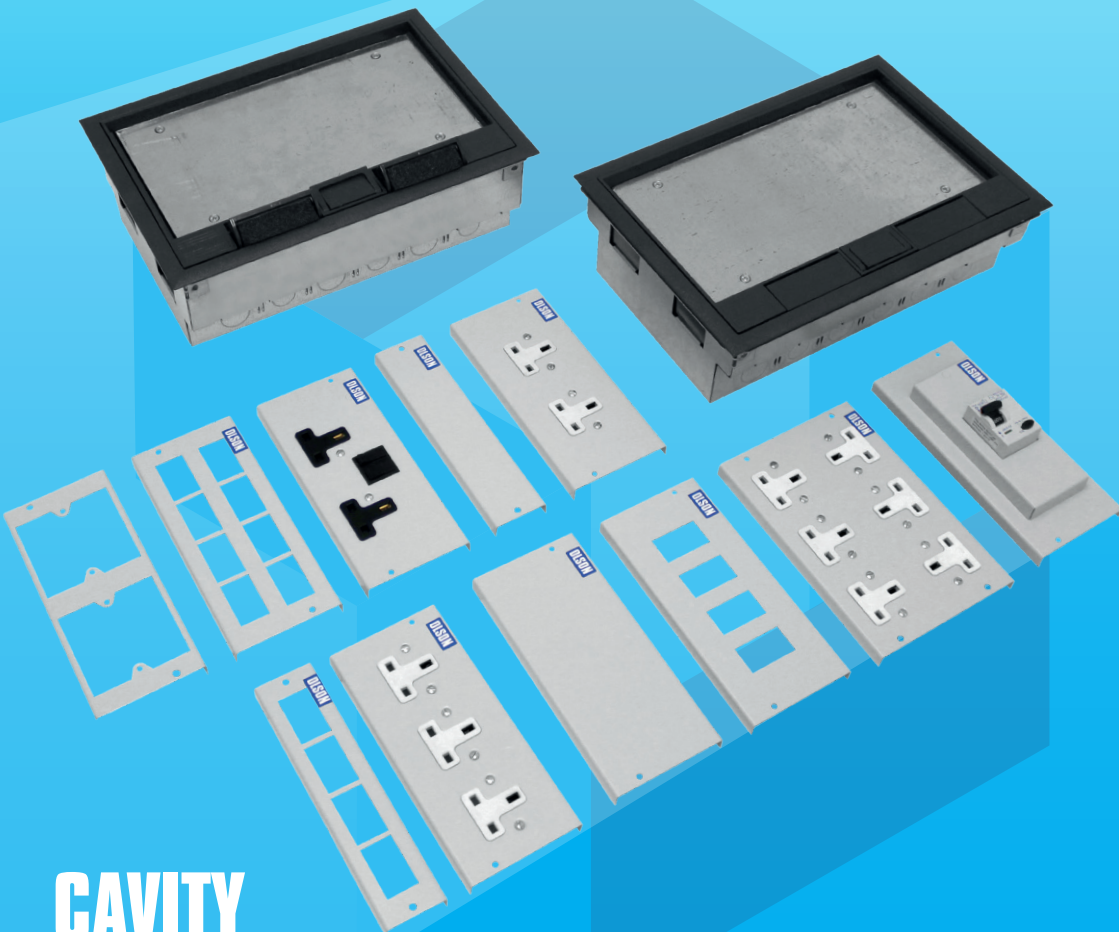




POWER DISTRIBUTION UNITS



CAVITY FLOOR BOXES



+44 (0)20 8905 7273

sales@olson.co.uk



Designed and
Manufactured in the UK



CAVITY FLOOR BOXES

Olson Electronics have expanded their product portfolio to include a range of cavity floor boxes providing power and data distribution within the modern office environment.

Designed with quality in mind, the floor boxes and plates are made from a highly robust steel construction and utilise a module sized plate system.

A robust steel sub-frame is used to support the lid in case of high-traffic environments. The design provides easy access for wiring and installation of accessories plus the sub-frame allows for fine adjustments to accommodate uneven flooring.

Standard Features

- Each compartment has 4 entry knock-outs for flexible conduits (2x 20mm and 2x 25mm)
- Reversible self-closing lid
- Adjustable sub-frame
- Single piece construction metal body
- Recessed lid to allow carpet infill
- Configurable internal compartment segregation plates
- Wide range of power, data and telecom sockets
- Meets all the requirements of a raised floor system

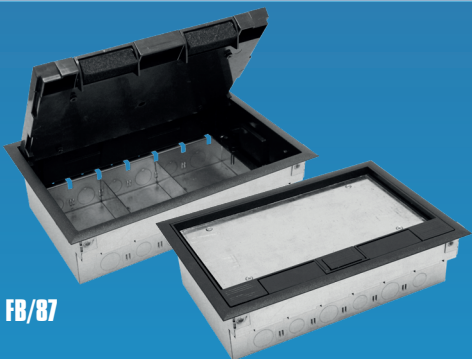
Bespoke and Pre-wired Service

Olson offer a complete bespoke service for these products including;

- A wide range of power and data sockets including international outlets
- Circuit breakers, RCDs and RCBOs
- Pre-wired configuration service including under-floor busbar tap-offs
- Custom colour finishes
- High density designs incorporating power and data



Cavity Floor Boxes

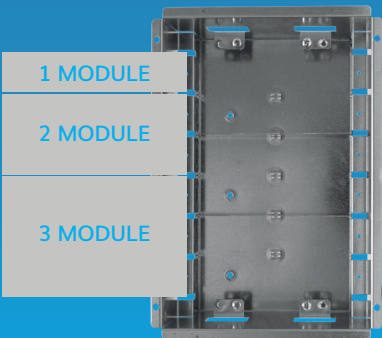


FB/87

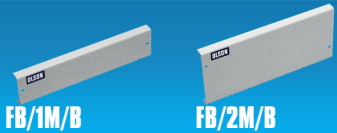


FB/100

Modular Space Example



PART NO.	DEPTH	NO. OF MODULES
FB/87	87MM DEEP	6
FB/100	100MM DEEP	6



FB/1M/B

FB/2M/B

Blank Plates

PART NO.	DESCRIPTION	NO. OF MODULES
FB/1M/B	1 MODULE BLANK	1
FB/2M/B	2 MODULE BLANK	2

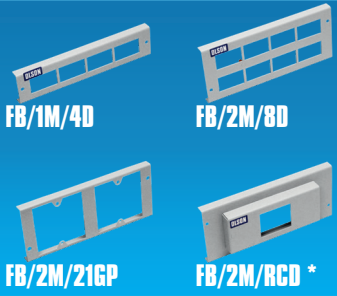


FB/2M/13A/2SW

FB/3M/13A/6

UK 13A Socket Outlet Plates

PART NO.	DESCRIPTION	NO. OF MODULES
FB/2M/13A/2	2 WAY	2
FB/2M/13A/2SW	2 WAY SWITCHED	2
FB/2M/13A/3	3 WAY	2
FB/3M/13A/6	6 WAY	3



FB/1M/4D

FB/2M/8D

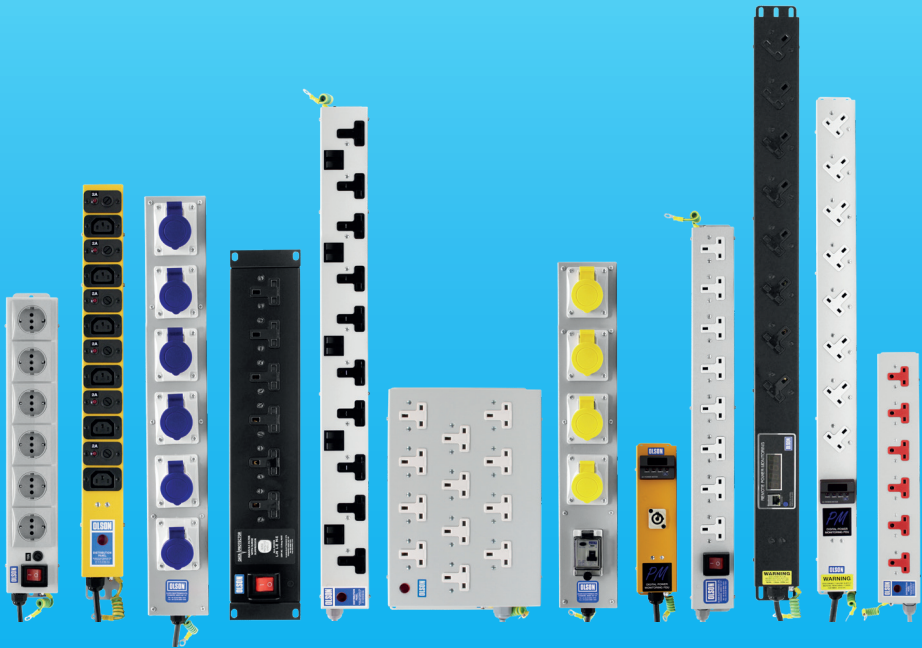
FB/2M/21GP

FB/2M/RCD *

Mounting Plates

PART NO.	FOR	NO. OF MODULES
FB/1M/4D	4 x RJ45 / LJ6C	1
FB/2M/4D	4 x RJ45 / LJ6C	2
FB/2M/8D	8 x RJ45 / LJ6C	2
FB/2M/11GP	1 x 1 GANG	2
FB/2M/21GP	2 x 1 GANG	2
FB/3M/12GP	1 x 2 GANG	3
FB/2M/RCD	RCD (* FOR FB/100 ONLY)	2

THE NUMBER ONE CHOICE FOR BESPOKE POWER SOLUTIONS



OLSON ELECTRONICS LIMITED

OLSON HOUSE, 490 HONEYPOT LANE, STANMORE, MIDDXX, HA7 1JY, UK

TEL: +44 (0) 20 8905 7273 FAX: +44 (0) 20 8952 1232

email: sales@olson.co.uk www.olson.co.uk

